

## Using the CrossTec SchoolVue Program

The SchoolVue software, installed on the instructor's console in the computer lab, ET343, allows you to control the students' computers; you can lock all computers, take control of a computer while showing its desktop on the LCD projector, and show your desktop on the students' machines while displaying on the LCD projector.

To start, double click the CrossTec SchoolVue icon



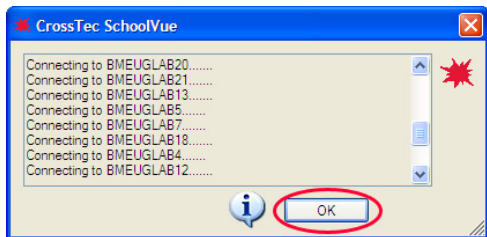
Click "Go"

The "Class Wizard" dialog box is a software window with a blue title bar and a close button. It contains several input fields and checkboxes for configuring a lesson. The "Go" button is circled in red.

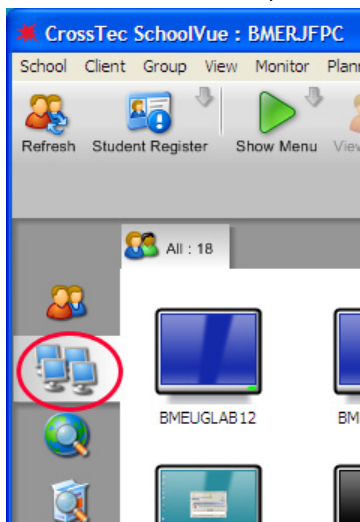
	Teacher Name	<input type="text" value="BME"/>
	Lesson Title	<input type="text" value="BME computer classroom"/>
	Room	<input type="text" value="343 Mudd"/>
	Load an existing Lesson Plan	<input type="text"/> <input type="button" value="Browse"/> <input type="button" value="Create"/>
	What time does this Lesson finish?	11 <input type="button" value="v"/> 25 <input type="button" value="v"/> <input checked="" type="checkbox"/> Open lesson
	Create a Student Register	<input type="checkbox"/>
	Automatically Reconnect Students	<input checked="" type="checkbox"/>
	Optimize Show for Performance	<input checked="" type="checkbox"/>
	Optimize Show for Reliability	<input type="checkbox"/>

Don't show this dialog again

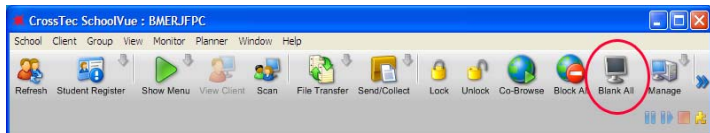
Click "OK"



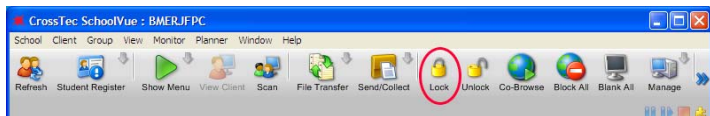
To see the students' monitors, click on the Monitor Icon



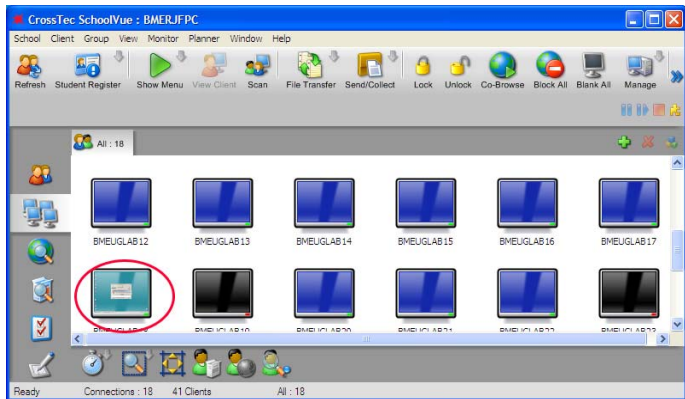
To blank all screens and prevent users from using the computers, click  
“Blank All”



To lock computers and put a large **ATTENTION REQUIRED** message on  
all screens, click “Lock”



To take control of a computer, double click on the monitor  
The student’s desktop will also be displayed on the LCD projector



To show your computer screen on the students' screens, click "Show Menu" and "Show" (Your desktop is concurrently displayed on the LCD projector)

